

# HEAT RECOVERY UNIT HR-WTW

- Air volume of 500 – 3500 m<sup>3</sup>/h
- Heat recovery with 90% high efficiency rate
- Reheating not required
- Balanced ventilation

## Description

The HR-WTW air handling units are applied in utility buildings such as offices, schools, sport halls, stores, etc. Heat recovery from every HR-WTW unit has a very high efficiency rating (minimum 90%) which makes reheating rarely necessary. There are various models of this unit available which are suitable for both indoor and outdoor installation. Every unit is supplied completely socket free and fully wired with maintenance switch.

If required, every unit can be supplied with a bypass regulator. This enables you to ventilate with cool fresh air independent of the indoor or outdoor temperature.

## Models

The HR-WTW product line is available for the following air capacities:

- HR-WTW 1500 (500 - 1500 m<sup>3</sup>/h)
- HR-WTW 2500 (1600 - 2500 m<sup>3</sup>/h)
- HR-WTW 3500 (2600 - 3500 m<sup>3</sup>/h)

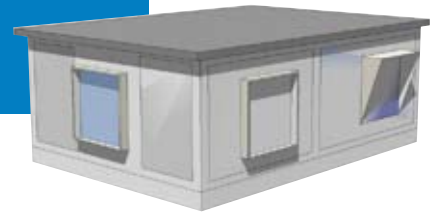
Each type is equipped with energy saving fans, optimized for the area in which it is to function. All units have a maximum external resistance of 150 - 200 Pa. You can choose for indoor or outdoor installation.

## Filters

The air intake is fitted with filter class F7 and the air extraction is fitted with filter class G4. The HR-WTW line is equipped with easy to remove filters to simplify maintenance and future inspections.

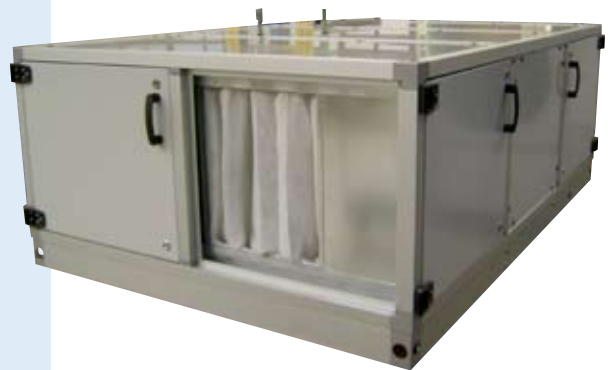
## Fans

- The HR-WTW equipped with double suction, direct driven IMOFA DDEC centrifugal fans
- a DDEC fan has integrated electronics
- energy saving, high efficiency, direct driven fans
- every fan delivers a constant volume
- statically and dynamically balanced
- an optimal balance between motor and fan ensures a very low noise level
- 1 fan for supply and 1 fan for extraction flows as standard



## Models

- HR-WTW 1500 (500 - 1500 m<sup>3</sup>/h)
- HR-WTW 2500 (1600 - 2500 m<sup>3</sup>/h)
- HR-WTW 3500 (2600 - 3500 m<sup>3</sup>/h)



# HEAT RECOVERY UNIT HR-WTW

## High capacity cross-flow heat exchanger

- a high capacity, aluminium heat coil following the cross current principle with at least 90% efficiency by nominal air volume. Supply and extraction flows are separated by applying a cross flow heat exchanger.
- high quality aluminium, corrosion free
- durable and completely recyclable
- condensation drainage to coated condensation basin

## Construction

Constructed of high quality, aluminium angled steel plating with standard 25mm insulation. Plating is pre-coated in the colour RAL 7035. The main advantage of this Pentapost construction is the high-class appearance.

- aluminium Pentapost construction
- pre-coated panels in the colour RAL 7035
- fire proof insulation, class B1 with a width of 25 mm
- excellent thermal and acoustic dampening
- aluminium base frame equipped with lifting holes
- a weather protection cover is supplied when chosen for outdoor installation
- a roof installation frame is available on request

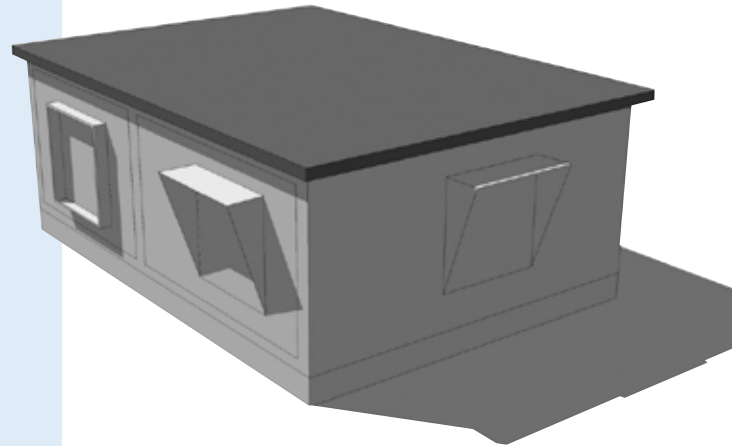
## Regulation

Every HR-WTW has the option for our own innovative regulating method, which allows for easy operation. If you choose a by-pass, this is then supplied with full regulation.

- completely wired and equipped with a maintenance switch
- electrical connection 230V/1ph/50Hz
- freeze protected
- possibility for remote control

## Accessories

- a full face by-pass
- complete regulation



## Models

- HR-WTW 1500 (500 - 1500 m<sup>3</sup>/h)
- HR-WTW 2500 (1600 - 2500 m<sup>3</sup>/h)
- HR-WTW 3500 (2600 - 3500 m<sup>3</sup>/h)

# HEAT RECOVERY UNIT HR-WTW

## Technical data

HR-WTW	type	HR-WTW 1500	HR-WTW 2500	HR-WTW 3500
Air volume (minimum)	m³/h	500	1600	2600
Air volume (maximum)	m³/h	1500	2500	3500
Efficiency WTW	%	90	90	90
Air flow temperature	C	-7	-7	-7
Air intake	C	18	18	18
<b>AIR INTAKE</b>				
Filter in the supply flow	class	F7	F7	F7
Fan (supply)	type	DDEC-9-7	DDEC-10-10	DDEC-10-10
External resistance	Pa	145	160	150
Required Motor rating	W	245	550	550
Installed Motor rating	W	245	550	550
Maximum current	A	2,4	6,4	6,4
Maximum fan speed	rev. / min	1350	1350	1350
<b>AIR EXTRACTION</b>				
Filter in the extraction flow	class	G4	G4	G4
Fan (extraction)	type	DDEC-9-7	DDEC-10-10	DDEC-10-10
Extern resistance	Pa	145	160	150
Required Motor rating	W	245	550	550
Installed Motor rating	W	245	550	550
Maximum current	A	2,4	6,4	6,4
Maximum fan speed	rev. / min	1350	1350	1350
Weight (indoor)	kg	≈ 375	≈ 475	≈ 525
Weight (outdoor)	kg	≈ 450	≈ 535	≈ 590
Indoor (lxwxh)	mm	1950x1400x750	1950x1400x1150	1950x1400x1350
Outdoor (lxwxh)	mm	1950x1400x790	1950x1400x1190	1950x1400x1390
Electrical connection	V/ph/Hz	230/1/50	230/1/50	230/1/50

## Product data and optional extras

HR-WTW FOR INDOOR INSTALLATION	HR-WTW 1500	HR-WTW 2500	HR-WTW 3500
Excluding by-pass and excluding regulation	993-015	993-025	993-035
Including fitted bypass and complete regulation	993-115	993-125	993-135
Extra resistance, 200 Pa external	on request	-	-

HR-WTW FOR OUTDOOR INSTALLATION HR-WTW	HR-WTW 1500	HR-WTW 2500	HR-WTW 3500
Excluding by-pass and excluding regulation	993-215	993-225	993-235
Including fitted bypass and complete regulation	993-315	993-325	993-335
Extra resistance, 200 Pa external on request	on request	-	-
Fitted roof and weather cover	included	included	included